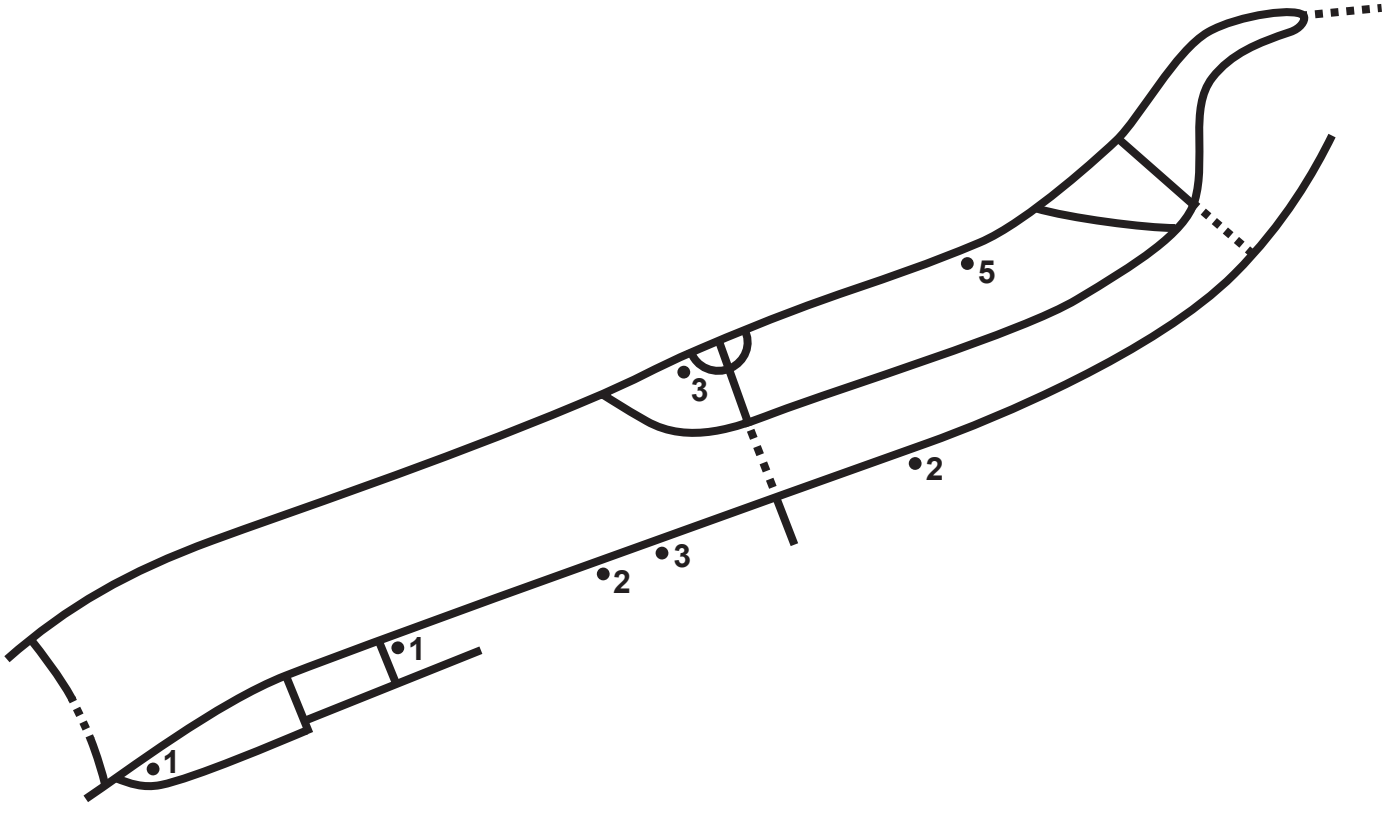




Walking the Catwalk

This is a **location puzzle**. It will require information from near the Esplanade stop, and you should not check out until you have confirmed you have that information (or have solved the puzzle).

One thing about cats - they love to mark their turf. It seems some particularly **historical markings** have been left behind from the cats with the big bucks. **Get off your behind**, take a look around, and figure out what they were trying to tell us!



- It'll be happy (4)
- Locations to get brought down to earth by fast things (9)
- Don't drink it - ___ it! (4)
- I don't think that's a word... (8)
- Adjective in opening quote of children's book (6)
- Forever enshrined with a spirit, a Flintstone, and Tom's (obese) nemesis (7)
- I'm not sure that's how math works, but apparently it equals serenity (8)